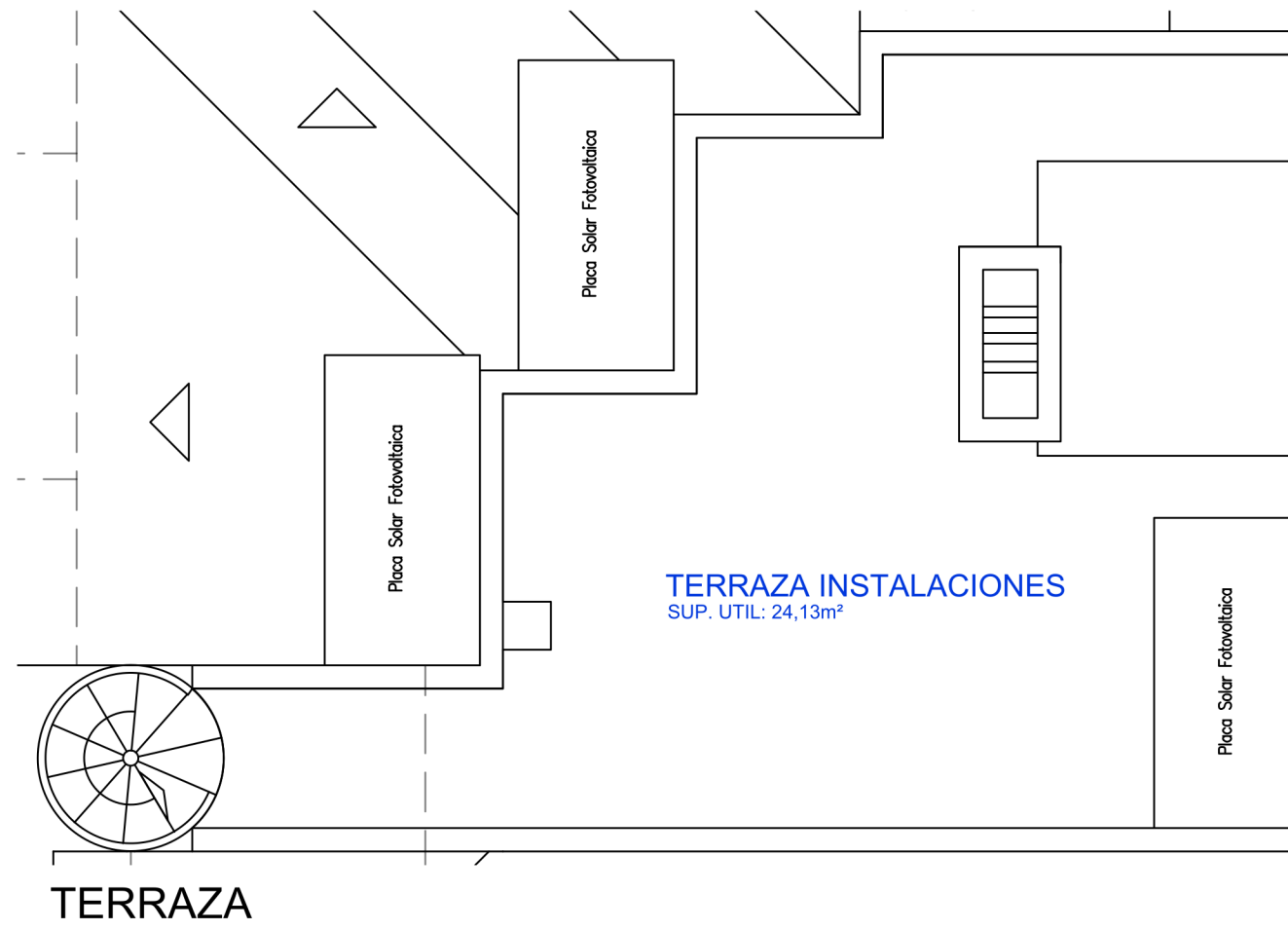
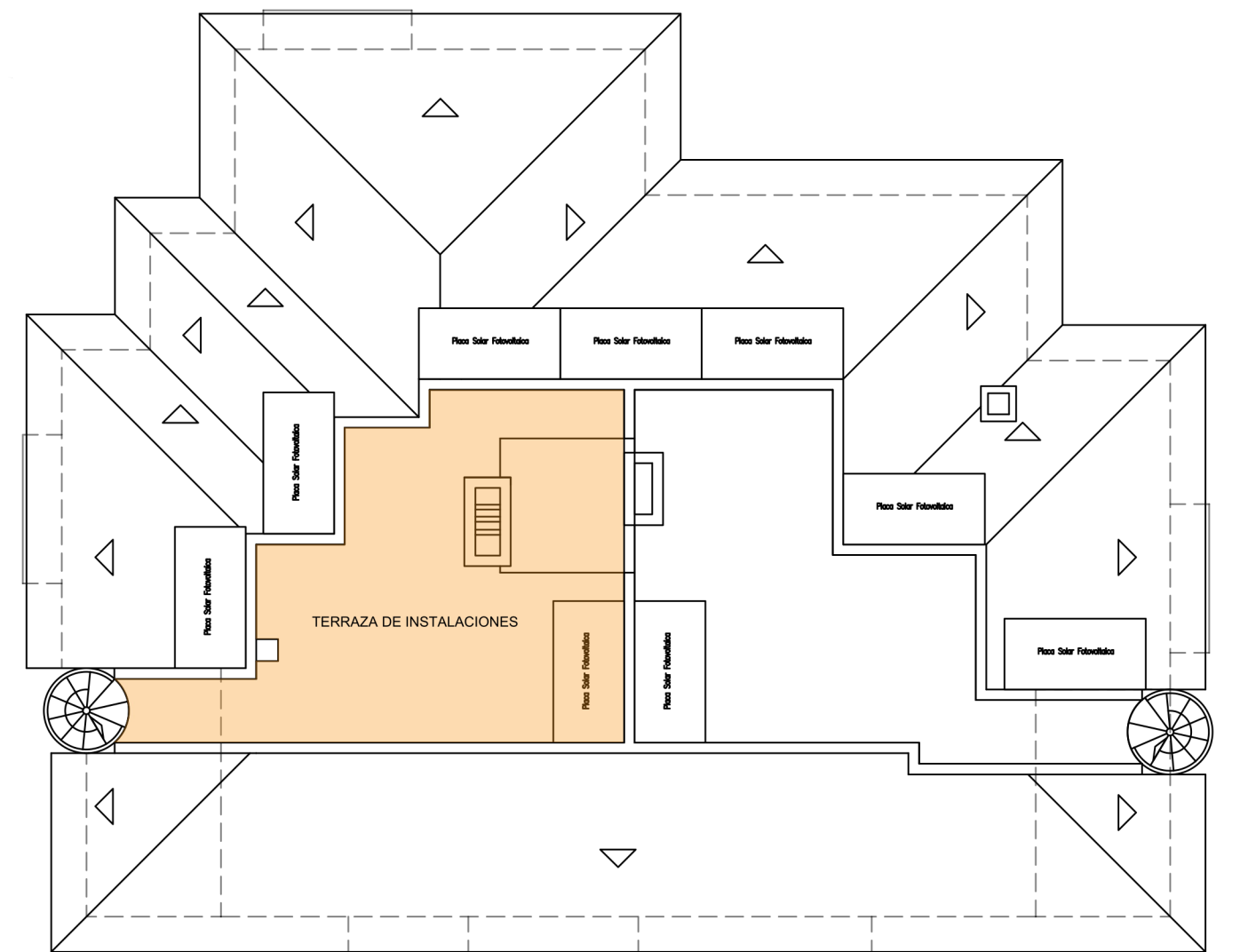
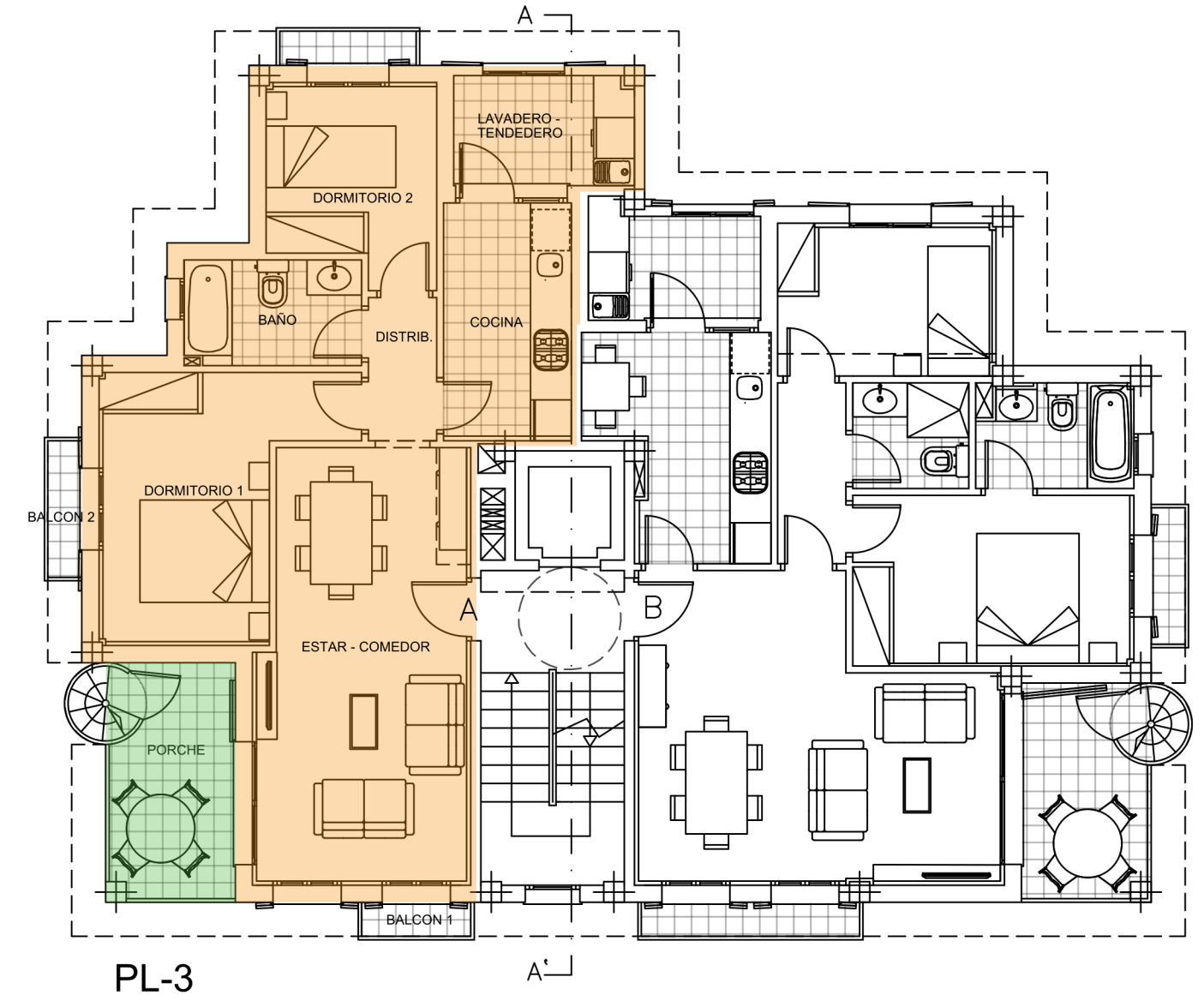


PL-3



SUP. ÚTIL PL-3 - VIV. A		SUP. TOTAL	
ESTAR - COMEDOR	19,46 m ²		
DORMITORIO 1	11,35 m ²		
DORMITORIO 2	6,65 m ²		
DISTRIB.	2,10 m ²		
BAÑO	4,03 m ²		
COCINA	6,41 m ²		
LAVADERO - TENEDERO	4,25 m ²		
TOTAL SUP. ÚTIL	54,25 m²		
		SUP. CONST.	
SUP. ÚTIL EN TERRAZA	24,13 m ²		24,13 m ²
BALCONES	2,80 m ²		2,80 m ²
		SUP. CONST. (50%)	
SUPERFICIE CERRADA	64,63 m ²		64,63 m ²
PORCHE	3,33 m ²		6,67 m ²
TOTAL.	67,96 m²		98,23 m²



TERRAZA